

Idaho Chapter OCTA Spring Meeting

10:00 am Saturday, May 8, 2021

Zoom Video Conference

Meeting called to order at XXX

Attendees: XXX

AGENDA

- Socialization
- Chapter business meeting
- Socialization
- Dream of getting back out on the trails

Please mute your microphone until ready to comment.

This will eliminate distracting background noises.

OLD BUSINESS

Previous meeting minutes

- Minutes from spring 2020 meeting (Saturday, October 10, Zoom digital meeting) were reviewed by the leadership team and are on the chapter website

Financial Report – Dan Dunne, Treasurer

Ending balance as of September 30, 2020	\$6,480.19
Income: Membership dues	\$480.00
Total Available	\$6,960.19
Expenses:	
11/9/2020 – Contribution for Kathy Conway	\$300.00
2/16/2021 – Jerry Eichhorst web hosting cost	\$143.88
2/23/2021 – ShoBan Museum OCTA membership	\$45.00
Total Expenses	\$488.88
Ending Balance – April 30, 2021	\$6,471.31
Business Share Savings	\$170.00

Motion and Vote to approve Financial Report



National OCTA News

John Briggs

Elko Convention

John Briggs

September 13-16 "99.9% certain"

Molly and Daphne Broadcast

John Briggs

Lane's Grave Sign Project

Don Wind

Lane's Creek Forest Management Project

Don Wind

Lava Ridge Wind Project

Dave Price, Don Wind

NHT Asset Inventory and Survey123 App

Paul Dinwiddie

The URL for the training video for the NHT Wayside/Sign (Asset) Inventory application that any OCTA member can access to learn more about the inventory application.

[Survey123 NHT Asset Inventory Training video for partners of the NPS National Trails Regions - 6,7,8 - YouTube](#)

Fort Boise Sign Project

Jerry Eichhorst

Eagle Planning and Zoning

Jerry Eichhorst

Idaho History Day

Virgil Clark

Canyon Creek Stage Station Roof

Kirk Halford







NEW BUSINESS

Calendar of Events 2021

(resuming as soon as life returns to normal)

- | | |
|------------------|--------------------------------------------------------------------------------------------------------------------------------------------------------------------------------|
| May 15 | Ezra Meeker and Howard Driggs Panel Discussion
Zoom meeting, 2:00 MST
Details in E-News |
| June 5 | Stricker Ranch Celebration
Re-opening after extensive improvements
Time 1:30 -4:00 |
| June 26-27 | NW Chapter Tour
OT Route – Pendleton to Whitman Mission
Limited to 8 vehicles
Contact Dave Welch for reservation
welchdj@comcast.net
Social distancing enforced |
| Late July/August | City of Rocks exploration
Granite Pass tour |
| September 13-16 | OCTA Convention, Elko, Nevada |
| September 27-30 | Idaho's Heritage Conference, Pocatello |
| October 9 | Fall chapter meeting,
Boise? Idaho State Historical Museum? |

- Need to train Don and Paul so they can lead the Elko convention California Trail pre-tour.
- Paul and I have talked about doing a tour of the Main Oregon Trail Back Country Byway to record sites for the NHT Asset Inventory.
- The Northwest Chapter is going to be installing T-rail markers in eastern Oregon sometime this summer. I will reach out to Gail Carbiener for information if anyone is interested in joining them. It is a lot of heavy, physical work.
- Would like to do more field work on Ditto Creek site

Please let me know if there are other places you would like to visit.

Chapter Opportunities

- Membership Chairperson
- Directors
 - Houdyshell's would like to step down in October

Does anybody have any additional new business?

Miscellaneous Notes from the Meeting:

National OCTA News

- From an NPS/NHT perspective, the OT 'period of relevance' stops in 1848.
- This needs to be extended to 1868/1869 in order to be able to include the North Alternate and Goodale's Cutoff in the NHT system.

Lava Ridge Wind Project

- Many challenges to overcome, including the impact on the wildlife habitat, the impact on the environment at night, and the proximity to the Minidoka Internment Camp (which is listed on the NRHP).

Old Fort Boise Project

- Project has been pushed to next year due to NPS staffing changes and project priorities.

NPS/NHT Asset Inventory

- Uses a phone app to perform the inventory
- NPS assets only (there seem to be few in Idaho currently)

Idaho History Day

- OCTA sponsorship but no entries
- \$250 cash award
- May need to raise awareness of the award

Canyon Creek Stage Station

- SHPO has determined that the Canyon Creek Stage Station is not eligible for an NRHP nomination.
- We need to do everything that we can to support the effort to protect the stage station as a national historic place.

Signing of the OT Recreation Area

- Signage has been updated (the maps and signs look really great!)
- A bathroom has been added to the site

Lanes Creek Forest Management Project

- Primary focus is on protecting the Lander Road
- Constructed by the government
- From Ft Bridger to Ft Hall

Meeting adjourned at XXX

Minutes recorded by Dave Price (Chapter Secretary)

End of chapter business meeting

Lava Ridge Wind Project

May 8th, 2021

Don Wind – Eastern Idaho Preservation Officer

Dave Price – Western Idaho Preservation Officer

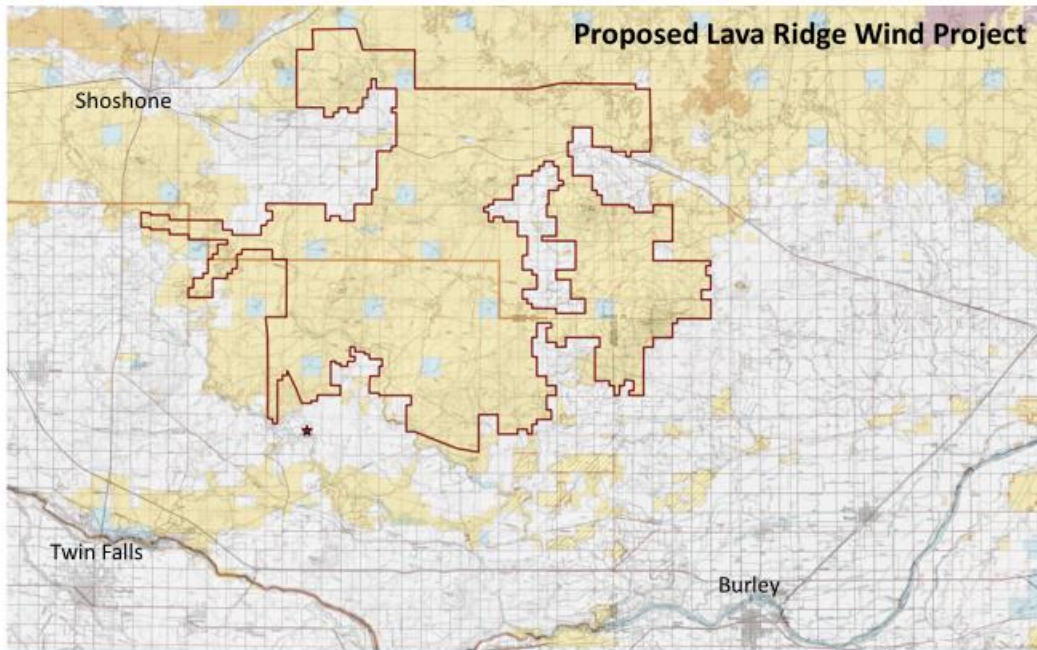
Section 106 – Background



Section 106 of the National Historic Preservation Act of 1966 (NHPA) requires federal agencies to consider the effects on historic properties of projects they carry out, assist, fund, permit, license, or approve throughout the country. If a federal or federally-assisted project has the potential to affect historic properties, a Section 106 review will take place.

Section 106 gives the ACHP, interested parties, and the public the chance to weigh in on these matters before a final decision is made. This process is an important tool for citizens to lend their voice in protecting and maintaining historic properties in their communities.

The Oregon-California Trails Association is involved in these discussions as a key consulting party



Lava Ridge Wind Project Details



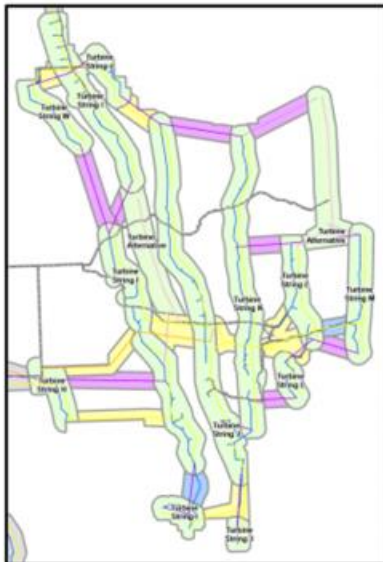
- Project area is approximately 180,000 acres
- Up to 400 wind turbines
- Tower height up to 740'
- More than 1000 MW of generating capacity
- Largest project of this type in the continental United States

Section 106 – APE Discussion



- Meetings were held by the BLM on May 6th and May 7th in order to provide consulting parties with an opportunity to discuss the Area of Potential Effects (APE) for the Lava Ridge Wind Project and recommended buffers
 - Many consulting parties were involved, including SHPO and the Shoshone-Bannock Tribe
 - Corridor Analysis approach
 - Physical impacts (Physical APE)
 - Visual and auditory impacts (Visual APE)

Physical APE



SWCA's proposed corridor types for NEPA analysis:

Turbine: ½ mile (2640 ft) wide; where turbines are proposed and any road, crane path, transmission/collector structure, or other project facility

- allows for flexibility to microsite individual turbines based on site-specific engineering or resource constraints

Transmission/Collector Lines: 0.4-mile (2112 ft) wide; where transmission and collector lines are proposed outside of turbine corridors

Road: 0.4-mile (2112 ft) wide; where roads or other permanent project components are located outside of a turbine or transmission/collector line corridor

Temporary Crane Paths: 0.4-mile (2112 ft) wide; where temporary crane paths fall outside of all other corridors.

Key Takeaways



- All parties were aware of the locations of the Main Oregon Trail and Goodale's Cutoff relative to the proposed project area
 - The maps clearly show the paths of both trails
- There do not appear to be any physical impacts of the project to either trail
- We will primarily be concerned with visual impacts to the trail, trail overlooks, and the overall trail experience
- They have already identified two Key Observation Points (KOPs) for assessing visual effects to the trails
 - One is close to the Milner ruts, and the other is near Goodale's Cutoff
- We have been asked to help identify other possible areas of the trail that we feel are critical for the assessment of the visual impacts



OCTA

- Finances
 - Operations
 - Endowment Funds
 - Fund Raising
- Membership
- Elko Convention
- Mid-year Meeting 2022
- Preservation Activity
- Four Trails
- Zoom Chapter Meetings
- Social Media

OCTA

- **Operationally we are in a strong position with Revenues Leading Expenses - without need of a distribution from the Endowment Funds. In fact, we made a return of unused funds to the Loomis (Preservation) Fund.**
- **The value of the Endowment Funds is \$1.97m – the highest it has ever been. We changed to a more aggressive strategy in 2019 and have benefited from that.**
- **That said the Association faces a number of areas where it needs to be strengthened**
 - Membership
 - Financial security
 - Capabilities

- **Finances**
 - **Operations**
 - **Endowment Funds**
 - **Fund Raising**
- Membership
- Elko Convention
- Mid Year Meeting 2022
- Preservation Activity
- Four Trails
- Zoom Chapter Meetings
- Social Media

OCTA

- The Board this week approved a proposal to bring in a Fund-Raising Consultancy to help determine what would be possible with a well-organized drive.
 - Membership is ageing. We need to upgrade our capabilities in the Social Media areas which can (and have been) attract more younger people.
 - Archaeology. There is a need to create a new section for the website to cover Trail archaeology.
 - Preservation. The number of issues is beginning to overwhelm our current capability.
 - Education outreach. Improving our capability to reach a younger group. Teaching materials and Social Media/Video.
 - Collections. Digitization will build an improved member resource and can be monetized.
 - Endowment. We are financially dependent on NPS funding.

- Finances
 - Operations
 - Endowment Funds
 - Fund Raising

- Membership
- Elko Convention
- Mid Year Meeting 2022
- Preservation Activity
- Four Trails
- Zoom Chapter Meetings
- Social Media

- Membership has risen slightly over the past quarter. The number of long-term members is still in decline, but we are picking up new members from the Social Media programs. These new members require extra attention to get them to join the Chapters. Currently stands at 1254 members in all classes.
- It seems likely that the Elko convention will go ahead.
 - Granite Pass preconvention caravan tour will be Sep 11 – 12 led by Paul and Don.
 - The Lamoille Canyon Tour is scheduled for the 11th
 - The Mapping workshop scheduled for 9th – 11th.
 - The Convention will run from the 13th to the 16th
 - The Board meeting is on the 12th.
 - Details on the web site at octa-trails.
 - Proof of Vaccination will be required for bus tours.
- No mid-year meeting arrangements have yet been made. Discussion have centered on working with the Mormon Battalion 175th anniversary celebration in January in Sand Diego. This may well be a hybrid meeting.

- Finances
 - Operations
 - Endowment Funds
 - Fund Raising

- Membership
- Elko Convention
- Mid Year Meeting 2022
- Preservation Activityt
- Four Trails
- Zoom Chapter Meetings
- Social Media

- You will hear from Don Wind/Dave Price about activity on the Lander Road and the massive Windfarm near Shoshone.
- Major work on
 - B2H at Baker and beyond
 - Fernley Swales
 - The 'R' project in Nebraska
 - Nevada – Long Canyon Mine
 - Johnson Ranch
- This week the Board looked again at what needs to be done on the Feasibility Study carried out by NPS on expanding the trails included as NHT.
- Of the 26 approved extensions two are in Idaho – Bidwell Bartleson and Raft River to Applegate.
- The period of Significance for the OT stops in 1848 and so precludes Jeffrey's/ Goodale's Cutoff, NAOT, Goodale's North etc. This week we agreed to add to the 'Bill of 26' a recommendation to change those dates for the OT and for the Mormon Pioneer Trail. We need help with our US Congressional and Senate members.

- Finances
 - Operations
 - Endowment Funds
 - Fund Raising
- Membership
- Elko Convention
- Mid Year Meeting 2022
- Preservation Activity
- Four Trails
- Zoom Chapter Meetings
- Social Media



IOCTA

- Molly and Daphne found the description of the OT Recreation Area and of the Reserve on our website.
- They gave a presentation in two parts to Boise on-line schools from the Oregon Trail remnants in the Recreation Area.
- Their father shot the live video with his laptop and a phone hot spot while their mother tuned in to the broadcast on a separate laptop to direct proceedings.
- At least three elementary schools were involved and there were a great many good questions.



IOCTA

Might be worth looking at this Summer

Trail down from the OT marker at the Recreation Area. It descends from Bench 3 to Bench 2 (four clear benches in the Rec Area)

Probably not a wagon trail but could have been a Pony Trail since it is the first point of descent to the Boise River from the Camas Prairie.

If not used by wagons – it could have been used by Emigrants on horses and to get livestock down.

Wagons could have been dropped down but possibly not from the marker itself due to the lava landslide.

On the other hand, I have been unable to find any diary entries that speak to any difficulties experienced by wagons at this point.

There are references (Ebey) to proceeding further west before descending – but not many.

Photo from junction of ID 21 and Surprise Valley.

